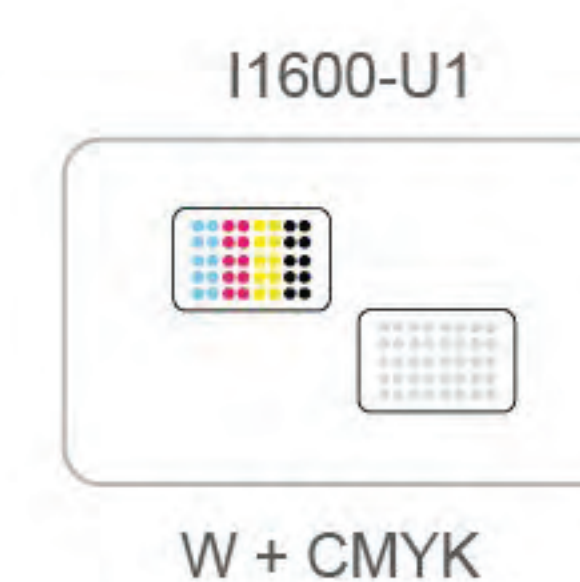
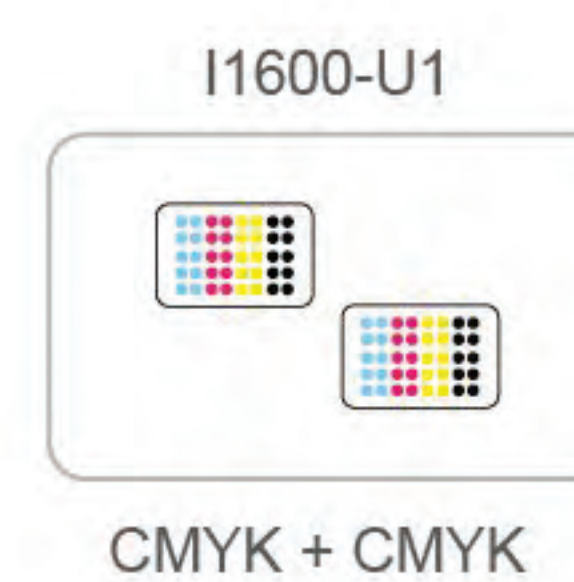


SA-2000UV

Four color, white + color UV roll to roll printer (I1600-U1)

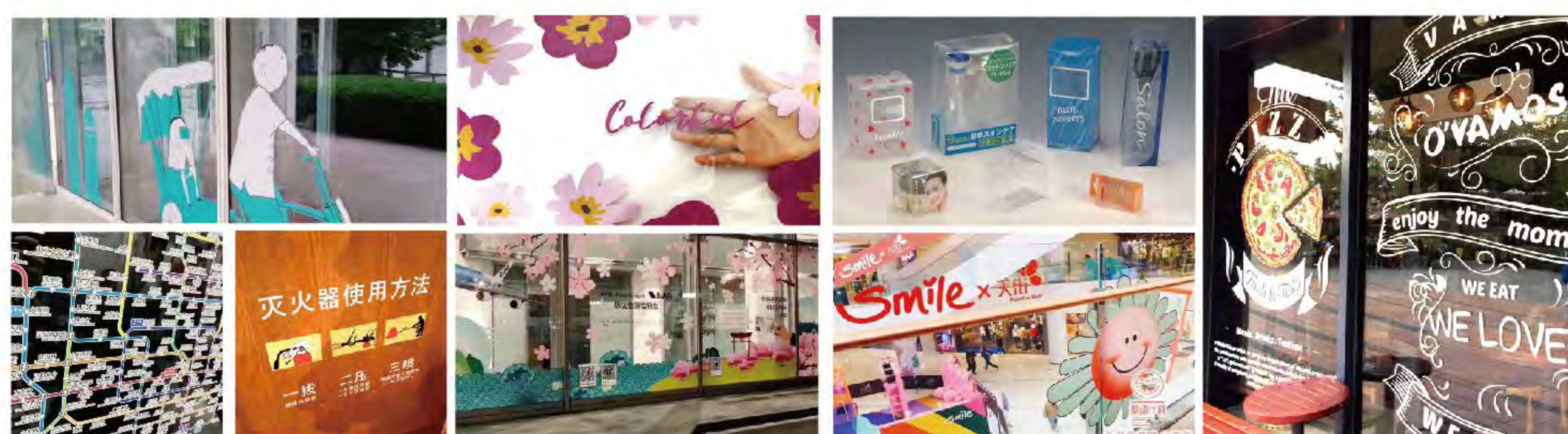


UV Ink



* 1.6m Double I1600-U1 Print Heads Speed

CMYK- 720*900dpi 6pass	21 m ² /h
CMYK - 720*1200dpi 8pass	17 m ² /h
CMYK - 720*600dpi 4pass	25 m ² /h



APPLICATIONS : light box posters, car stickers, advertising hoardings, golden and silver paper, leather printing, high-end gift boxes, food packaging, labels, operation panel and switch printing, etc.

CMYK

720x900dpi 21 sqm/h(6pass)

720x1200dpi 17 sqm/h(8pass)

W+CMYK

720x900dpi 11 sqm/h(6pass)

720x1200dpi 8 sqm/h(8pass)

● Technical Specifications

Model	SA-2000UV	
Print Head	Double I1600-U1 Print Heads	
Printing Technology	Piezoelectric Inkjet	
Acceptable Media	Width	63.7 in.(1620 mm)
	Thickness	Maximum 39 mil(1 mm)
	Weight	132 lb.(60 kg)
Printing Width	63 in.(1600 mm)	
Ink Cartridges	Type	UV Ink
	Ink Supply	Bulk ink supply system with 500ml ink tank
	Color	CMYK / W+CMYK
Printing Resolution	Maximum 2400 dpi	
Speed	CMYK	6pass (720*900dpi) 21 m ² /h
	W+CMYK	6pass (720*900dpi) 11 m ² /h
Curing Unit	Water-cooling UV lamp	
Interface	Ethernet	
Power Supply	AC 220V ± 10%, 50/60 HZ	
Dimensions(with stand)	101.7(W)x26.9(D)x58.3(H) in. (2585(W)x685(D)x1482(H) mm)	
Weight(with stand)	529 lb. (240 kg)	
Environment	Power on	Temperature: 59 ℉ to 90 ℉ [15℃ to 32℃] / Humidity: 35 to 80% (no condensation)
	Power off	Temperature: 41 ℉ to 104 ℉ [5℃ to 40℃] / Humidity: 20 to 80% (no condensation)
Accessories	Data cable, media presser, user manual, maintenance tank, ink cartridges	

Two-layer printing technology for color conversion

The 1st layer

White Ink

The 2nd layer

Color Layer



CMYK



W+CMYK

- Leadshine DC Servo Motor
- THK high precision mute rail
- Igus mute drag chain, quite working environment guaranteed
- Automatic up-and-down capping station, protects the print head more effectively

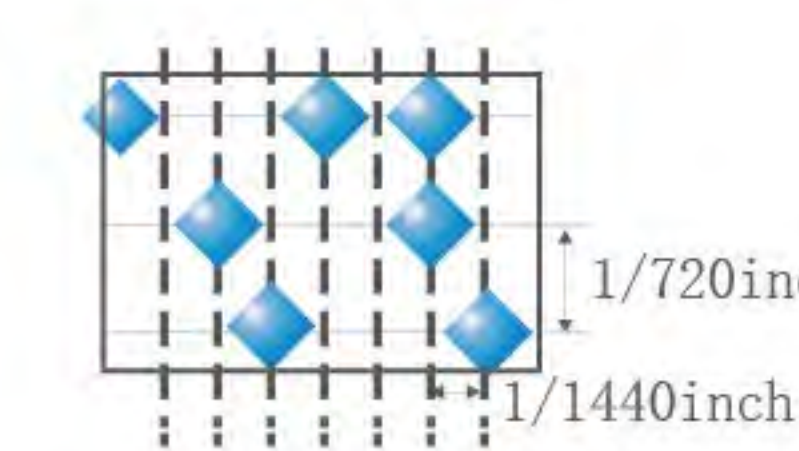
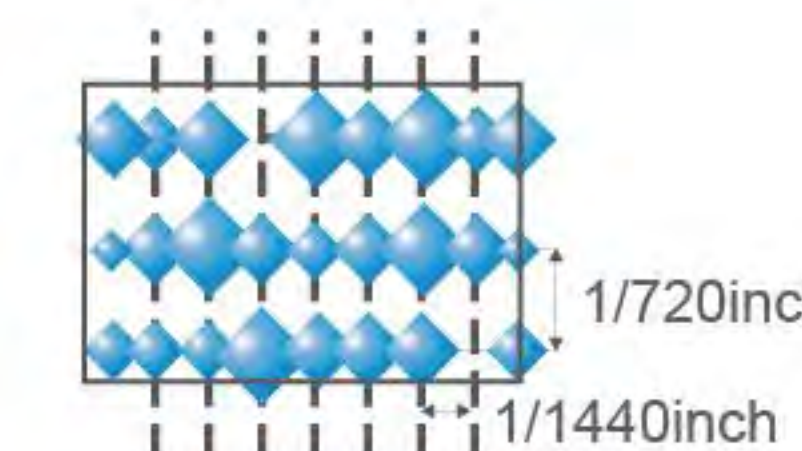
Two Epson I1600-U1 head array

◆ Variable



Min 3.5pl Variable Ink Droplet

◆ Fixed



- Equipped with two I1600 print heads, 3.5pl ultra-small ink droplets
- 1.6m UV roll to roll printer dedicated for white + color printing
- Scientific head array, high-precision bottom plate, craftsmanship of quality
- Light weight and compact design, saves workshop space



500ml large capacity ink supply system



High quality imported THK high precision guide rail



Moisturizing cleaning assembly



Automatic take-up



LED backlight



Adjustable pinch rollers